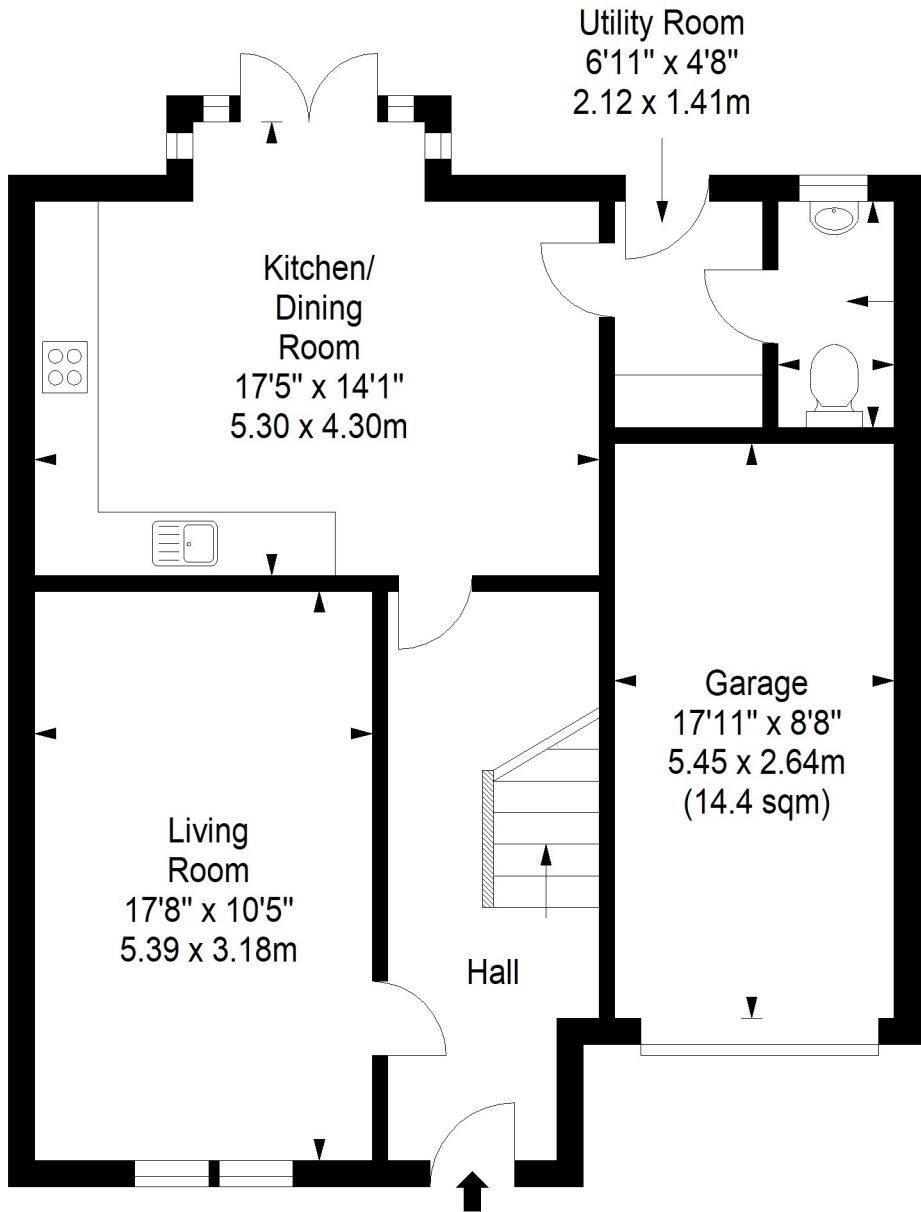


Ground Floor

Approx. 55.8 sq. metres (600.6 sq. feet)



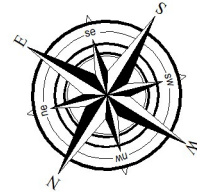
Utility Room
6'11" x 4'8"
2.12 x 1.41m

Kitchen/
Dining
Room
17'5" x 14'1"
5.30 x 4.30m

Living
Room
17'8" x 10'5"
5.39 x 3.18m

Hall

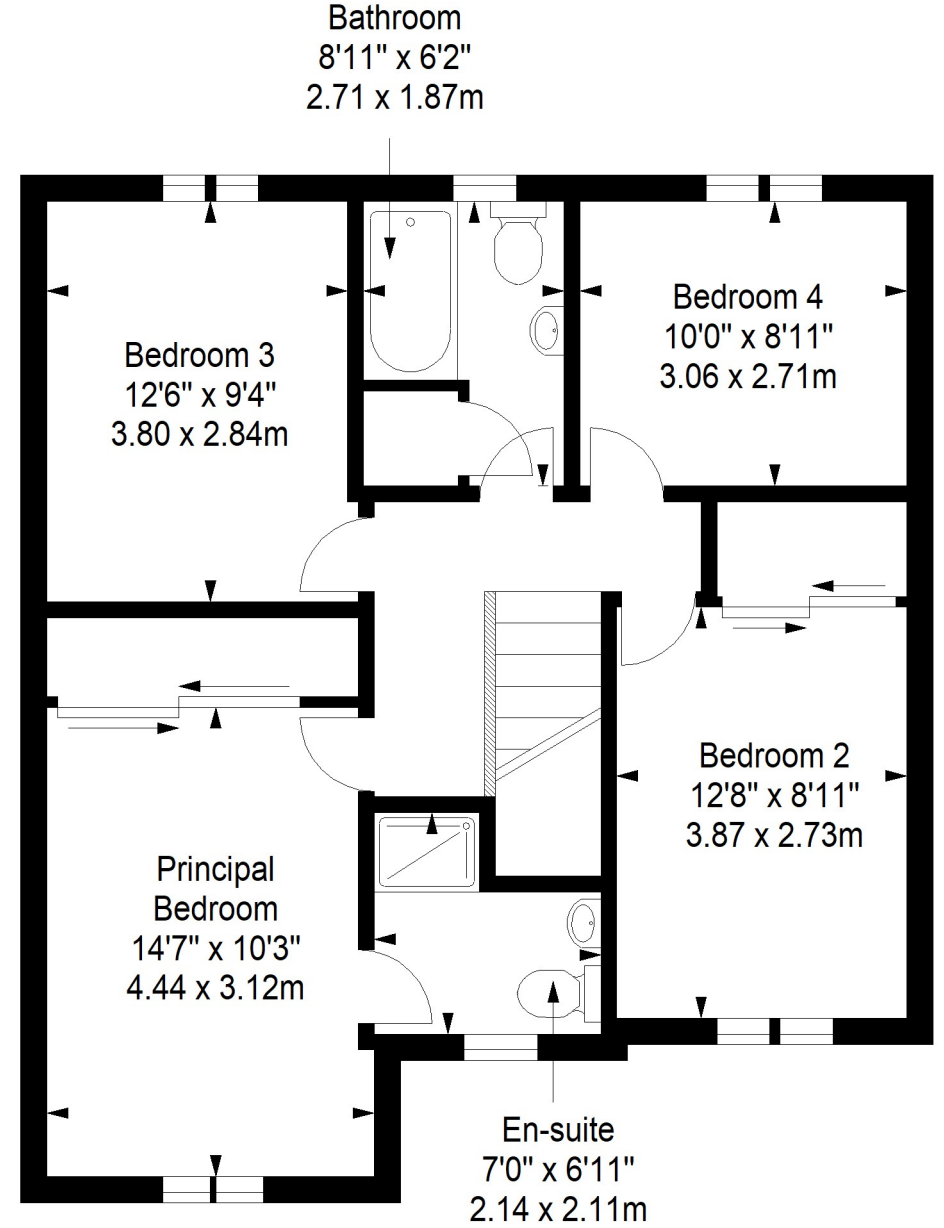
Garage
17'11" x 8'8"
5.45 x 2.64m
(14.4 sqm)



WC
6'11" x 3'8"
2.11 x 1.11m

First Floor

Approx. 68.1 sq. metres (733.1 sq. feet)



Bathroom
8'11" x 6'2"
2.71 x 1.87m

Bedroom 3
12'6" x 9'4"
3.80 x 2.84m

Bedroom 4
10'0" x 8'11"
3.06 x 2.71m

Bedroom 2
12'8" x 8'11"
3.87 x 2.73m

Principal
Bedroom
14'7" x 10'3"
4.44 x 3.12m

En-suite
7'0" x 6'11"
2.14 x 2.11m

Total area: approx. 123.9 sq. metres (1333.7 sq. feet)